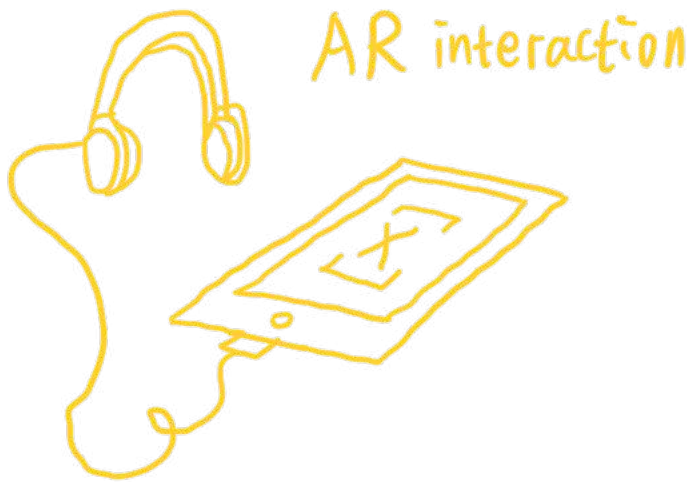


# Logbook Reflection — Casa Batlló



I chose Casa Batlló for this assignment because, even though it's not a typical museum, it uses its architectural space, exhibition design, and AR interaction to clearly show Gaudí's ideas. Walking through the house, I could really feel the materials and atmosphere, and the interactive guide helped me understand the stories behind the design. I think it fits well with the assignment's focus on space experience and how information is shared with visitors.



During my visit to Casa Batlló, I realized that this space is more than just a historic building — it feels like an open conversation between design, materials, and the people who walk through it. Gaudí's use of wood, glass, ceramic tiles, and flowing organic shapes creates a strong connection between the building and nature. The light changes throughout the day, and the textures of the walls, windows, and stairs make the whole space feel alive rather than static.

changes in wall  
gloss

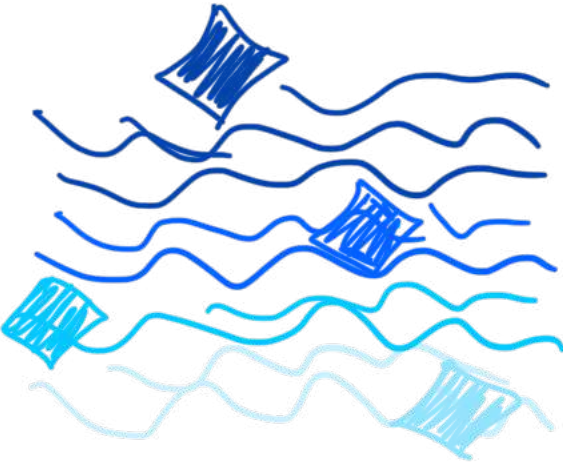
like glowing  
scales

water ripple  
glasses



simulate underwater  
visual effects

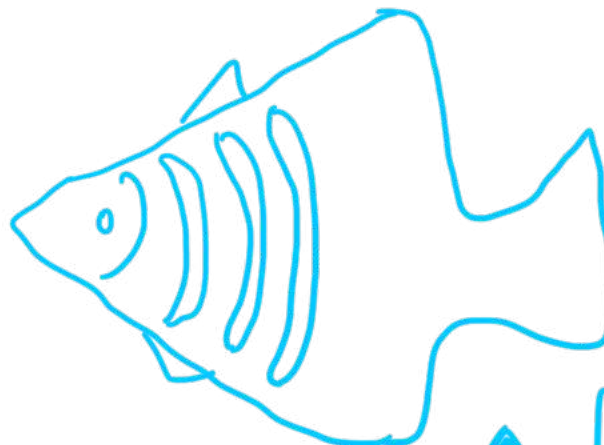
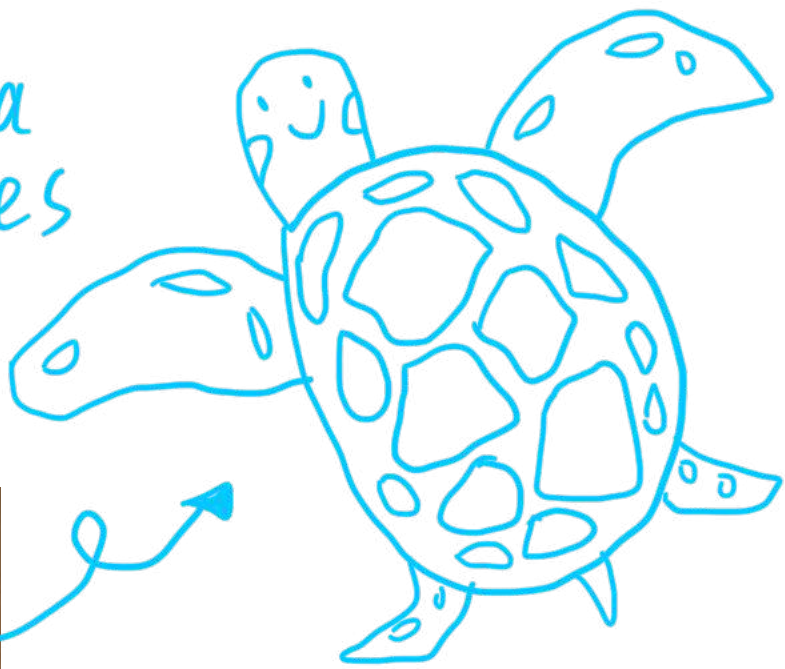
Blue gradient  
bricks simulate  
the color of  
sea water



colored glass  
to reduce  
direct light

I bought the Gold ticket, which came with an iPad for an AR tour. This made the visit really interactive and fun. Through AR, I could see how the house looked when it was fully furnished, and I also learned about Gaudí's inspiration. For example, the windows transformed into turtle shells, and the air vents looked like fish gills. It helped me understand the way Gaudí brought nature into his designs, and the experience was much easier to connect with because of the technology.

sea  
turtles



fish  
gills

Living Room



pearl in  
the shell

The space was full of different kinds of visitors — students, architects, tourists — and everyone was exploring in their own way. I noticed that the design of the house encourages people to slow down, look closer, and imagine the story behind every corner, which is what makes this place more than just a building, but also a meaningful exhibition space.

